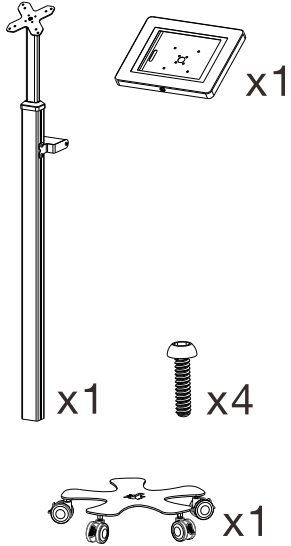


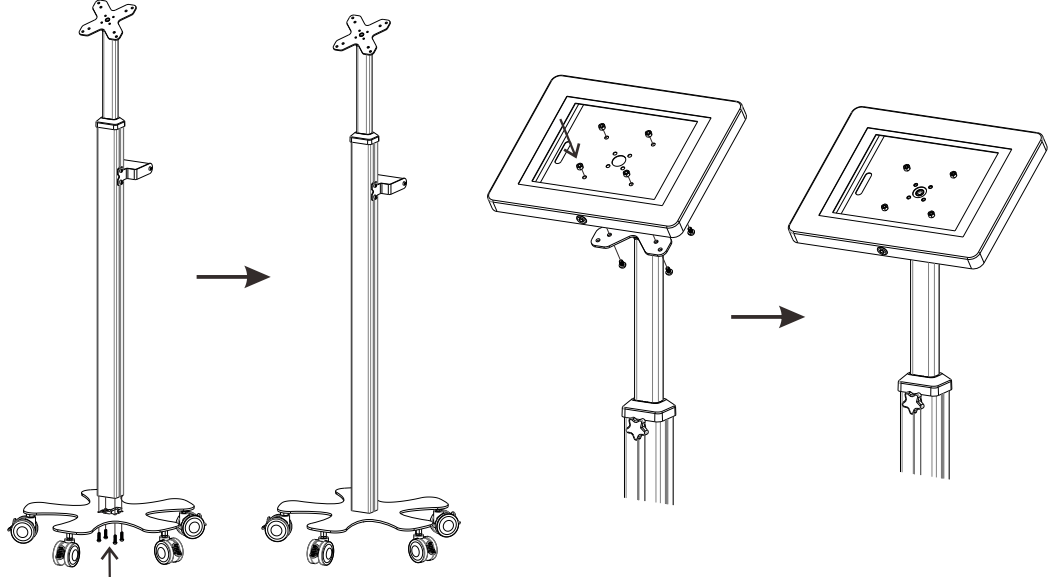
ASSEMBLY INSTRUCTIONS

Rolling Medical Tablet Kiosk with Handle

PARTS:

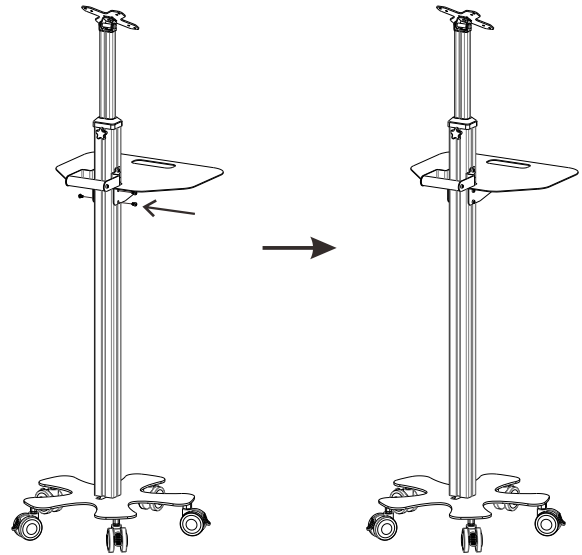
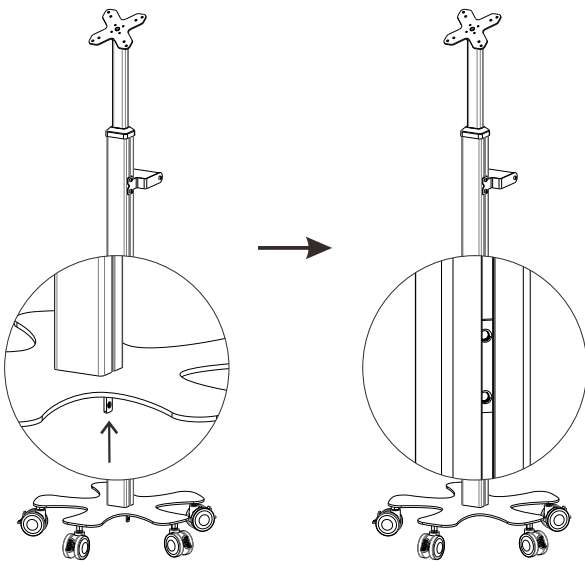


Assemble the base with the pole using 4 included screws and tighten them to secure the stand. Attach the tablet enclosure to the top of the stand and fix it with screws and nuts.

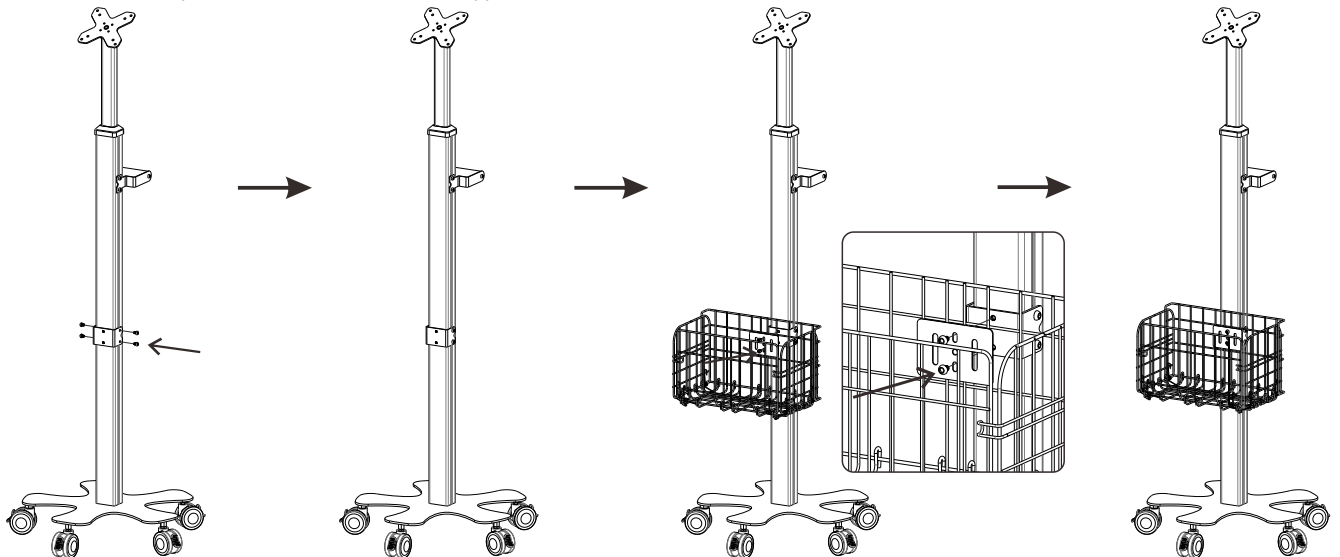


Before assembling each accessory, insert needed T-slot nuts into the T-slot on the side of the upright pole from the bottom. Slide the nuts up to the desired height and hold them when assembling.

Assemble the laptop tray (IPDMEDTR, sold separately)



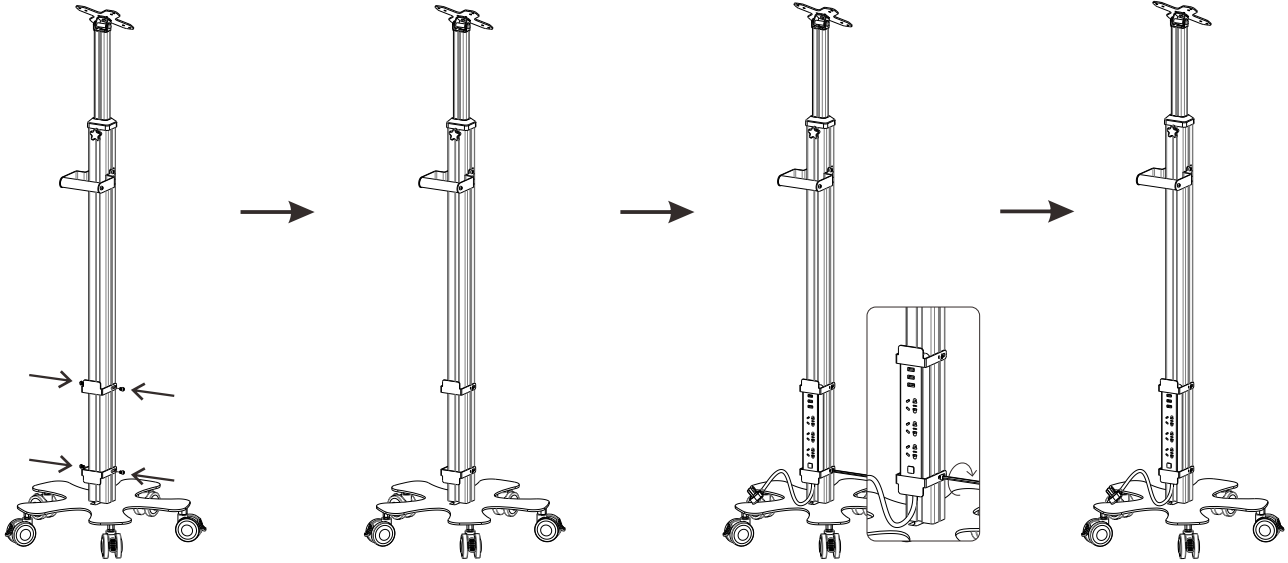
Assemble the wire basket (IPDMEDBS, sold separately)



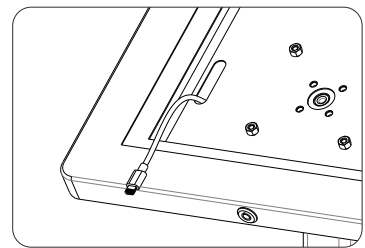
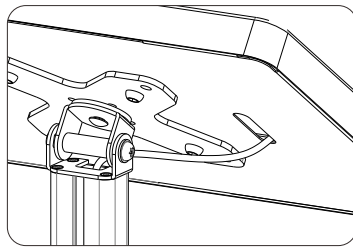
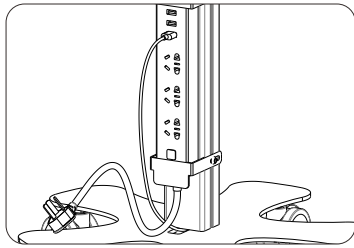
ASSEMBLY INSTRUCTIONS

Mobile Medical Tablet Kiosk

Assemble the power strip cleats (IPDMEDCL, sold separately). Attach the cleats to the pole by using screws. Do NOT tighten screws completely. Place your power strip (not included) in between the cleats and adjust the height as needed. Tighten screws to secure the power strip.



Wire your charging cable (not included) through the pole and connect to your tablet (not included) and power strip. See the suggested connecting method below:



Assemble the lockable utility box (IPDMEUTBX, sold separately). Attach 2 brackets to the pole first, then fix the utility box onto the bracket securely.

